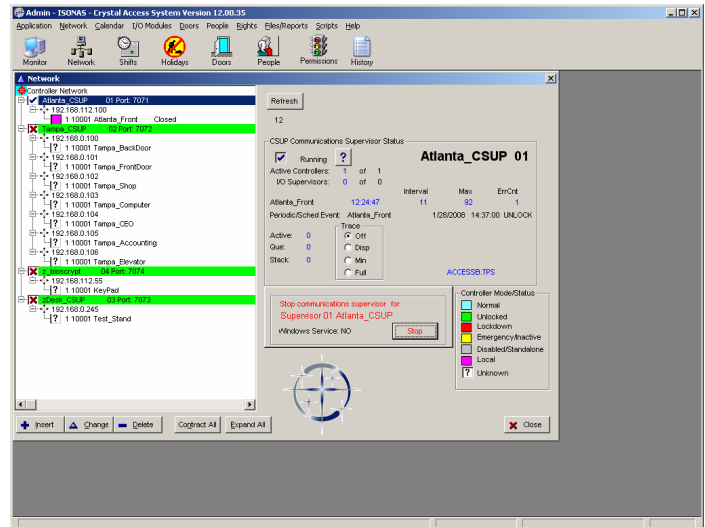


Presenting the ISONAS Crystal Matrix™ Software Package

Powerful feature set enables easy control of security to facilities.
Optimized for the ISONAS PowerNet IP Readers™

Industry leading advantages:

- FREE with the purchase of ISONAS reader-controllers
- Full-featured Access Control software package
- Supports unlimited number of Card-holders
- Supports unlimited number of Doors
- Supports unlimited number of Shifts
- Monitor Application included for Security Guard or Receptionist usage
- Standard Windows interface. Supports multiple workstations without special licensing requirements
- Provides optional AES Encryption of data on the network.
- Efficient programs and supporting database minimizes workstation hardware requirements



The ISONAS Crystal Matrix software package is a fully featured Access Control software system. It provides fine-detailed level control of all access security related issues. Reports are available for all system activity, as well as real time reporting on who is currently in the facility.

Real-time monitoring of the system's activity includes the display of card holder images and floor plans, as well as Operator Override operations such as lock-downs and manual door operations. The system also supports display of configurable alarm conditions.

The Crystal Matrix system can initiate automatic actions, such as the scheduled unlocking and locking of doors, through its scheduling features, or the execution of user-configurable custom action-sets through its scripting features.

Optional Add-on Software Features:

Advanced Security Option

The ASO is used when a system has different administrators configuring and controlling the Crystal Matrix software. ASO enables the definition of what areas within the overall system that each administrator is allowed to control. ASO also enables the users of the Monitor Program to watch sub-areas of the whole Access Control system.

Badge Printing

Utilizing photo captures from a digital camera and other graphical files, the badge printing application allows the creative design of the graphical format to be used for the company's credentials as well as the actual printing of the badges. This application is sold separately from the ISONAS access control system but runs

Crystal Matrix Distinctive Features:

Card-holder flexibility	<ul style="list-style-type: none"> Unlimited number of cards for each card-holder Grouping feature Multiple images for each card holder Badges may expire based on Date or Usage
Location flexibility	<ul style="list-style-type: none"> Anti-passback Dual-Authentication Elevator Control Manual Operations supported Grouping of doors
Scheduling Flexibility	<ul style="list-style-type: none"> Scheduled unlock/lock feature Special Events Holidays
Easy Installation	<ul style="list-style-type: none"> Standard Windows installation process. Applications and database are designed to be self-contained and isolated from other installed products.
Supported	<ul style="list-style-type: none"> ISONAS "no worry" policy provides technical assistance via phone, web & Email

Recommended Workstation Specifications

Operating System
<ul style="list-style-type: none"> Microsoft Windows XP Pro Microsoft Windows Server 2000 / 2003
CPU
<ul style="list-style-type: none"> 1.8 GHz Intel Pentium IV or higher
Memory
<ul style="list-style-type: none"> 1 GB Minimum
NETWORK INTERFACE
<ul style="list-style-type: none"> Ethernet 10Base-T
Mouse
<ul style="list-style-type: none"> PS/2 bus type or equivalent
Monitor
<ul style="list-style-type: none"> SVGA (1024 x 768)
Free Hard Disk Space
<ul style="list-style-type: none"> 50 MB



e, Suite101 Boulder, Colorado 80301 USA 800/581-0083 X102 isonas.com

T +1 603-577-8830 15B Charron Avenue
 F +1 603-880-4827 Nashua, NH 03063
 sales@integrasense.com www.integrasense.com